

# Rocky RS11 Fiber



## Rugged revolution

There are three important factors when considering rugged mobile computers; weight, ruggedness and performance – The Rocky RS11 series from MilDef excels in each area.

Without sacrificing any of its rugged performance for military applications, the Rocky RS11 packs all the performance needed, and more.

Despite its low weight and size, the Rocky RS11 is designed for extreme environments and is made to be used in the field. MIL-STD-810G and IP65\* certification is standard.

## Guaranteed performance

Products supplied by MilDef, are always provided with lifetime support to ensure that the equipment maintains peak performance over many future missions.

\*True IP65, Rocky RS11 IP certification is performed without rubber caps  
MilDef reserves the right to update the information at any time without notice

 **Stream**<sup>\*</sup>  
Local Support & Sales

 **milDEF**

# Rocky RS11 Fiber

## Technical Specification

**CPU** Intel Core i7-3517UE 1.7 GHz (Max Turbo Boost Frequency 2.8 GHz)

**RAM** Max 8 GB DDR3 1600 MHz

**Graphic** Intel HD Graphics 4000

**Storage** 256 GB SATA III SSD (removable)

**Display** 13.3" Widescreen (1600 x 900), sunlight readable, IPS LCD with LED backlight

**Sound** HD Audio and stereo speakers  
Embedded digital mic

**Keyboard/mouse** 87-key with Backlight, Capacitive Touchpad with multi-touch, works with gloves (Win 8 compatible)

**Interfaces (right)** 1 x SSD Bay

**Interfaces (left)** 1 x SD Card Slot (supports SDHC/SDXC)  
1 x x SIM Card Slot  
1 x USB 3.0 (USB-IF BC V1.2 for 1.5A fast charger)  
1 x USB 3.0  
1 x GigaLAN RJ45

**Interfaces (rear)** 1 x MIL DC in  
2 x USB 2.0  
1 x VGA  
1 x RS232  
1 x LC Fiber connector\*\*

**Interfaces (internal)** 5 x internal mini PCIe ( 4 Full / 1 half size)  
1 x Internal USB 2.0  
1 x Internal USB 3.0  
1 x internal Audio/Headset  
1 x VGA (RGB)

**Primary Battery** Removable 11.1V / 6040 mAh Li-Ion Polymer battery

**Power Input** AC Adapter 90W AC 100-240V 50/60Hz  
DC-in 12- 32V with Surge Protector

**Case** CNC milled Aluminum (Colors available in black or green)

**Dimensions** 338 x 285 x 28 mm (W x D x H, with corner rubbers)

**Weight** 2.9 kg – Depending on configuration

**Certifications** CE, FCC, WEEE, REACH, IP65 (open port, without caps), MIL-STD-810G\* and MIL-STD-461 Ground Army\*, WHCK

**OS** Windows 7

## MIL-STD-810G

## Operating

## Storage

**Altitude** 4572 m (15000 ft) 12192 m (40000 ft)  
Method 500.5, (procedure I, II)

**Temperature** -20 °C to 55 °C -40 °C to 70 °C  
Method 501.5 & 502.5, (-4 °F to 122 °F) (-40 °F to 158 °F)  
(procedure I, II)

**Temp Shock** -20 °C to 60 °C -  
Method 503.5 (-4 °F to 140 °F)  
(procedure I)

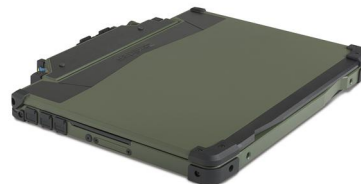
**Shock** 40 G, 11 ms 40 G, 11 ms  
Method 516.6, (procedure I)

**Vibration** M548 Tracked Vehicle, OH58A/C Helicopter and Composit wheeled vehicle vibration  
Method 514.6, (category 1, 14 & 20)

**Rain** 276 kPa, 5 Surfaces, 40 min/Surface  
Method 506.5, (procedure II)

**Humidity** - Ten 24 h test cycles  
Method 507.5

**Salt Fog** - Salt 5 ±1 %, 24 h wet + 24 h dry/cycle. Total 2cycles / 96 h  
Method 509.5, (procedure I)



\*Contact MilDef for full specifications of MIL-STD-810G and MIL-STD-461F  
\*\* Other Fiber options available



Building 9, 257 Jean Avenue  
Central Office Park  
Centurion  
South Africa  
Tel +27 12 664 4515, Fax +27 12 644 0302  
email info-cs@cstream.co.za  
www.cstream.co.za



www.mildef.com